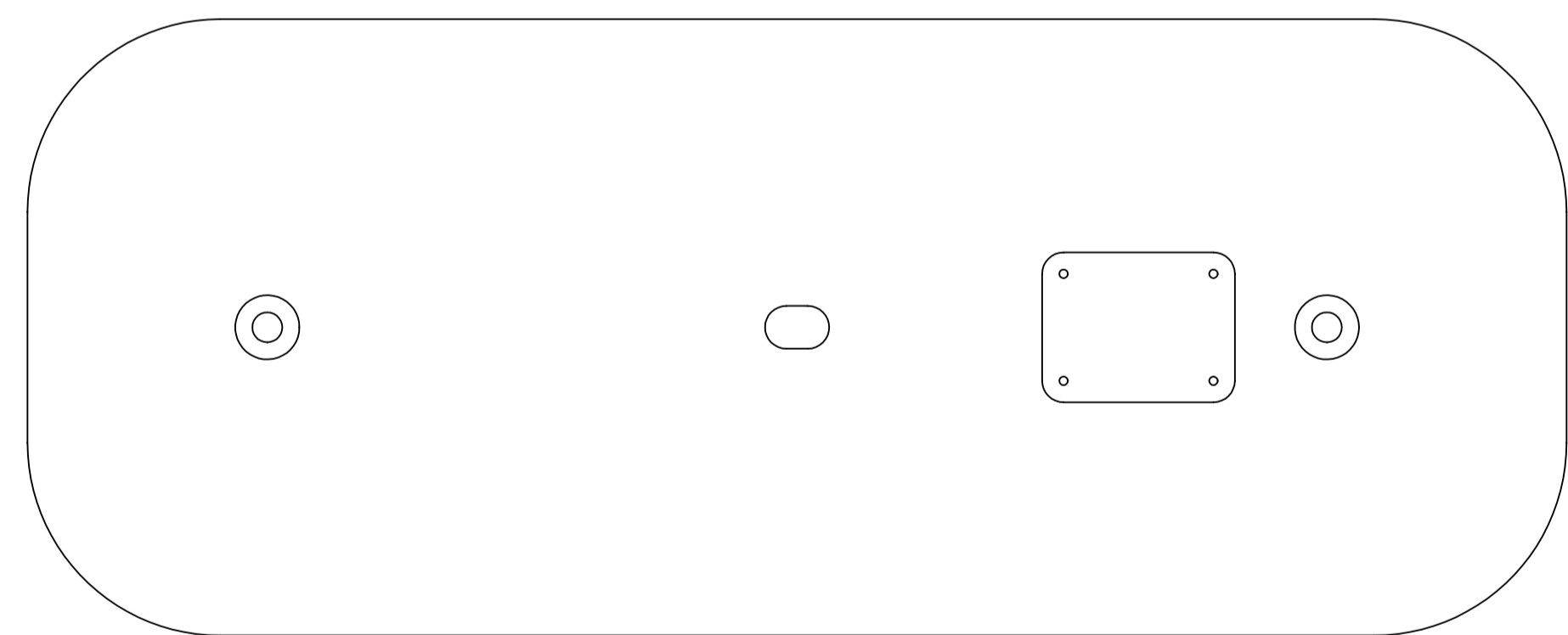
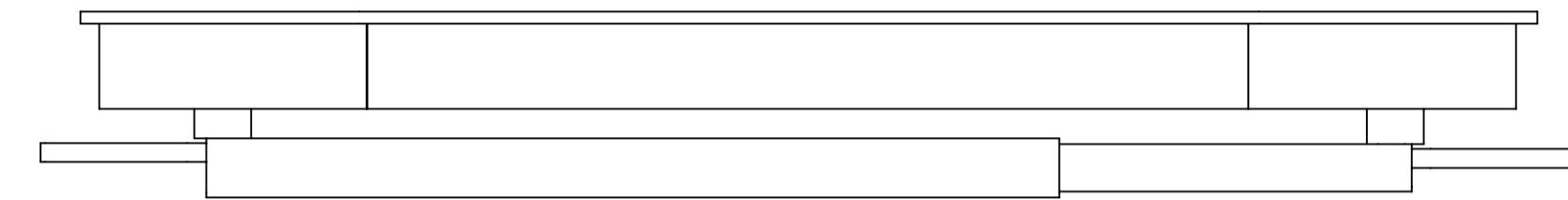


CLASS B SECURE STEEL LID TO SUIT P2 PIT

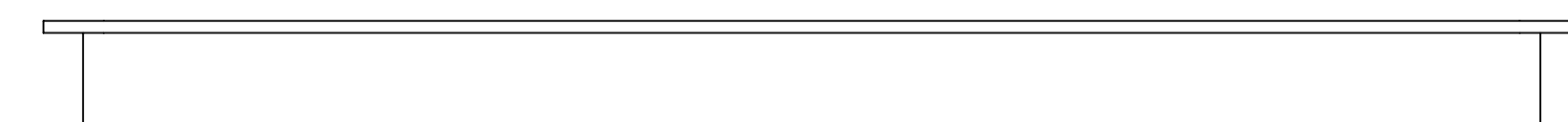
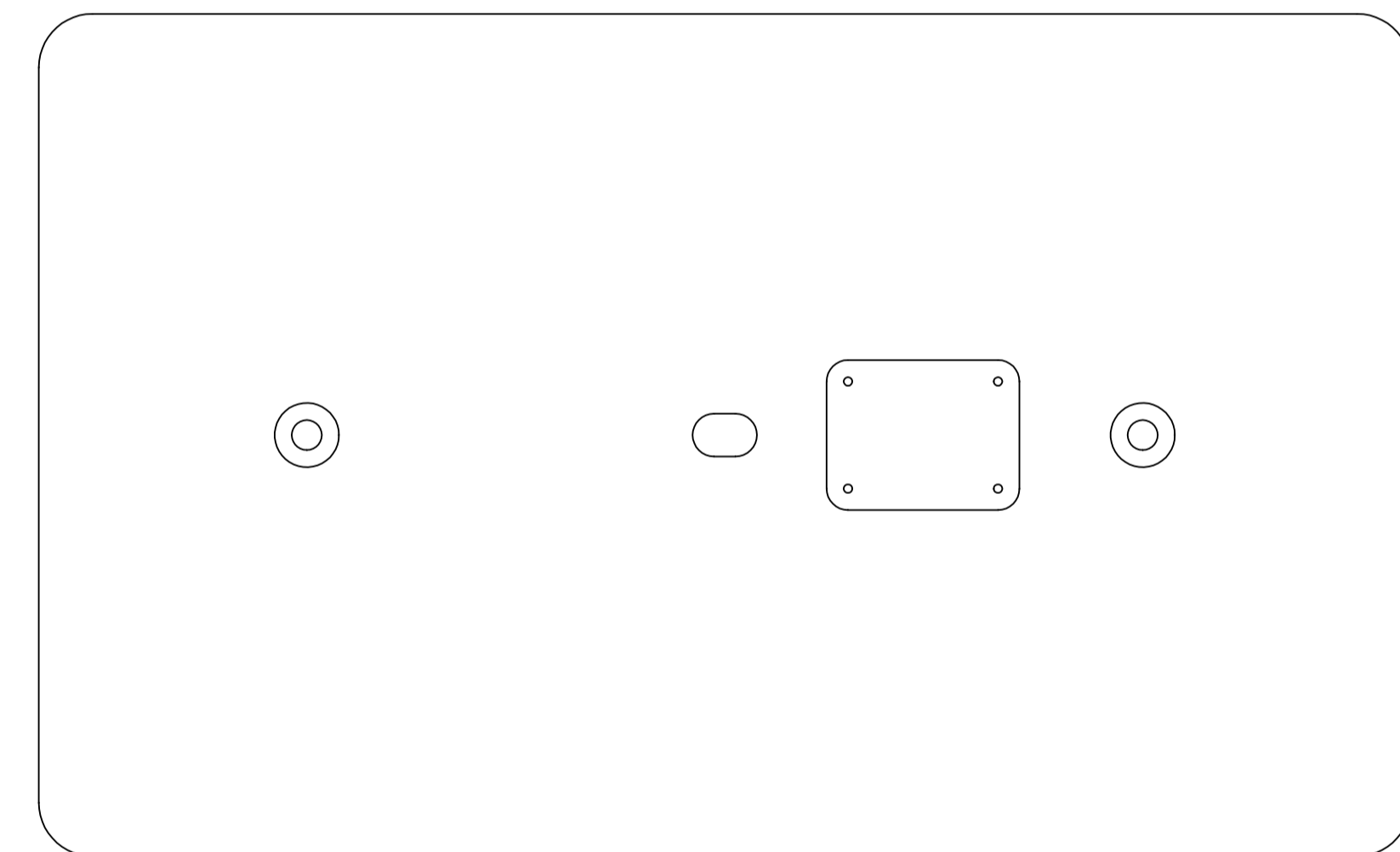


CLASS B SECURE STEEL LID TO SUIT P3 PIT

PIT TYPE	PART NUMBER
P2	PUNPIT P2
P3	PUNPIT P3
P4	PUNPIT P4
P5	PUNPIT P5
P6	PUNPIT P6
P7	PUNPIT P7




TYPICAL CLASS B SECURE STEEL LID WITH SECURING BAR



CLASS B SECURE STEEL LID TO SUIT P4,P5. P6 AND P7 PITS

- NOTES:
- ALL SECURE STEEL LIDS CAN BE SUPPLIED AS:
 - LID ONLY
 - LID AND SECURING BAR
 - LID, LOCKING ASSEMBLY AND PLASTIC PIT

 <p>PUNCH Manufacturing</p>	DIMENSIONS ARE IN MILLIMETERS		NAME	DATE	<p>Punch Manufacturing</p> <p>TITLE: SECURE STEEL PIT LIDS CLASS B</p> <p>DWG NO. PMAN-DPTI-3001</p> <p>SCALE: 1:3</p>
	TOLERANCES:		DRAWN		
	FRACTIONAL ±		CHECKED		
	ANGULAR: MACH ± BEND ±		Q.A.		
TWO PLACE DECIMAL ±					
THREE PLACE DECIMAL ±					
<p>PROPRIETARY AND CONFIDENTIAL</p> <p>THE INFORMATION CONTAINED IN THIS DRAWING IS THE SOLE PROPERTY OF PUNCH MANUFACTURING. ANY REPRODUCTION IN PART OR AS A WHOLE WITHOUT THE WRITTEN PERMISSION OF PUNCH MANUFACTURING IS PROHIBITED.</p>		DO NOT SCALE DRAWING			<p>A1</p> <p>SHEET 1 OF 1</p>